

AVONDALE PLANNING AND ENVIRONMENTAL LINKAGES (PEL) STUDY

NEW ORLEANS RAIL GATEWAY PROGRAM
AN ECONOMIC ENGINE FOR OUR COMMUNITY

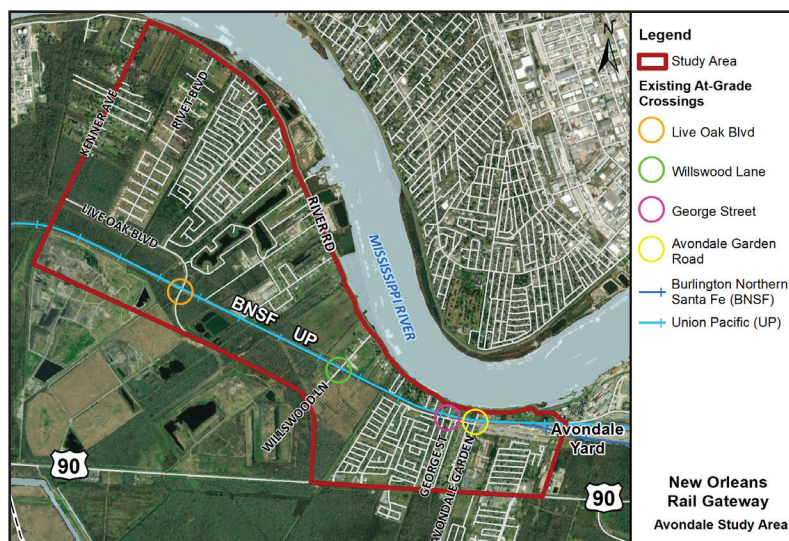
The Louisiana Department of Transportation and Development (DOTD) in coordination with the New Orleans Regional Planning Commission (RPC) and the railroads operating in the New Orleans metropolitan area is conducting a Planning and Environmental Linkages (PEL) study to evaluate the feasibility of consolidating some or all of the roadway-rail at-grade crossings at Live Oak Boulevard, Willswood Lane, George Street and Avondale Garden Road and replacing them with one, or possibly more, road-over-rail grade separations.

These crossings were identified as Projects W10 through W13 project in a 2007 New Orleans Rail Gateway (NORG) Infrastructure Feasibility Assessment (2007 Study). The location and number of grade separation(s) will be evaluated as part of this study.

On average, 31 freight and passenger trains cross these roadways each day resulting in vehicle delays of possibly 10 minutes or longer for trains to clear the crossings. There have been 27 train-vehicle crashes at these four crossings since 1977, with 9 being injury and 2 being fatality crashes. There have been four vehicle-vehicle crashes for the 3-year period from 2017 - 2019.

PROJECT GOALS

- Reduce vehicle delay due to rail traffic and Avondale Rail Yard switching operations
- Improve safety
- Eliminate truck traffic from roadways posted as "No Truck Route" with a 5-Ton Limit
- Improve intermodal connectivity



State, Federal, and Local Sponsors



PUBLIC MEETING FOR THE NORG AVONDALE PLANNING AND ENVIRONMENTAL LINKAGES (PEL) STUDY

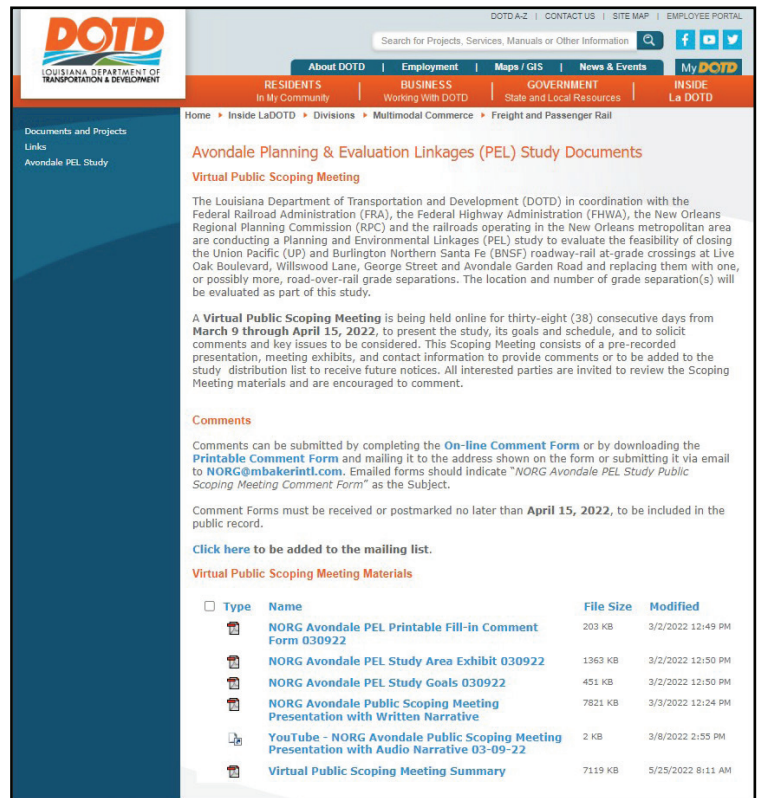
The first public meeting for the New Orleans Rail Gateway (NORG) Avondale Planning and Environmental Linkages (PEL) Study was held online for 38 consecutive days from March 9, 2022 through April 15, 2022. The NORG Program is an on-going study to evaluate rail and roadway improvements, or “Program of Projects”, to upgrade the NORG infrastructure in Jefferson and Orleans Parishes to increase Regional competitiveness and enhance economic growth.

The public meeting was advertised in local newspapers, in press releases and public service announcements (PSAs) distributed to local media outlets, on door hangers placed on study area residences and businesses, in DOTD MyDOTD email announcements, and on the NORG Program webpage. The technical presentation, exhibits, and comment form were posted on the DOTD NORG Program webpage for access via personal computer, cell phone or tablet. Individuals could request to be added to the study mailing list directly from the webpage. The presentation with scripted narrative was available in both written (PDF) and audio (YouTube) formats. Those without Internet access could request hardcopies of the meeting materials.

The presentation included:

- An overview of the NORG Program and the ongoing Jefferson Highway Rail Crossing Relocation Project,
- An overview of the Avondale PEL Study, and
- How to stay involved and participate in the decision-making process





A Summary of the Virtual Public Scoping Meeting has been posted on the NORG Program webpage. The Summary is also available for review at the Live Oak Library in Waggaman, and the Jane O’Brien Chatelain Westbank Regional Library in Harvey.



The presentation, exhibits, and comment form are available on the NORG Program webpage at www.dotd.la.gov/AvondalePELStudy.

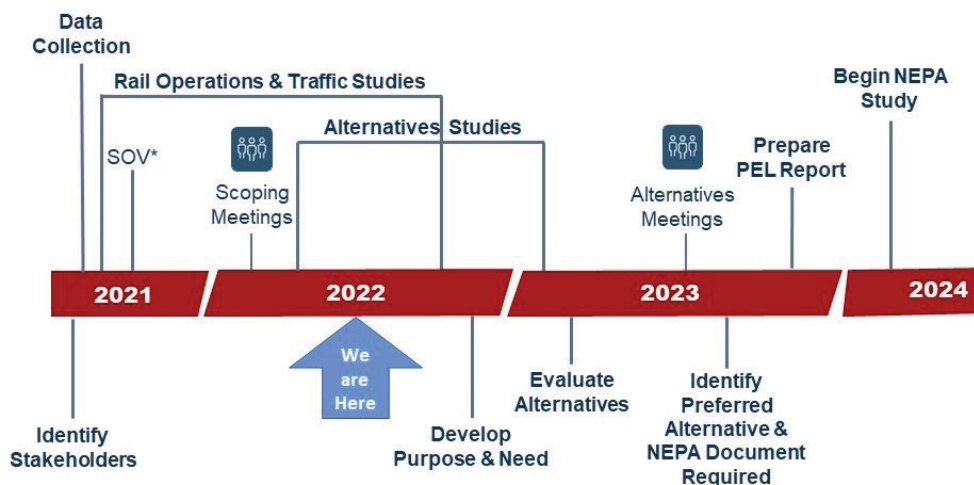
COMMENTS

There were 103 webpage views and 46 views of the YouTube presentation. Six comment forms were received during the March 9 – April 15, 2022 public comment period. The comments included:

 <p>Crossing Delays</p>	 <p>Safety Concerns</p>	 <p>Emergency Services Access</p>	 <p>Train Horn Noise</p>
--	--	--	---

NEXT MEETING

The next meeting to present Alternatives is anticipated to be held Summer 2023. This meeting will be announced through newspaper notices, press releases and PSAs, door hangers, DOTD MyDOTD Email announcements, on the NORG Program webpage, and USPS and email notices sent to contacts on the mailing list.



STAY INFORMED

If you would like to be added to the contact list for the Avondale PEL Study, please contact the Project Team at:

- **Information Line:** (504) 488-6196
- **Email:** NORG@mbakerintl.com
- **Mail:** P.O. Box 56845, New Orleans, LA 70156-6845

New Orleans Rail Gateway Program

c/o Hawthorne Agency

P.O. Box 56845

New Orleans, LA 70156-6845